

The Bina™ shrug

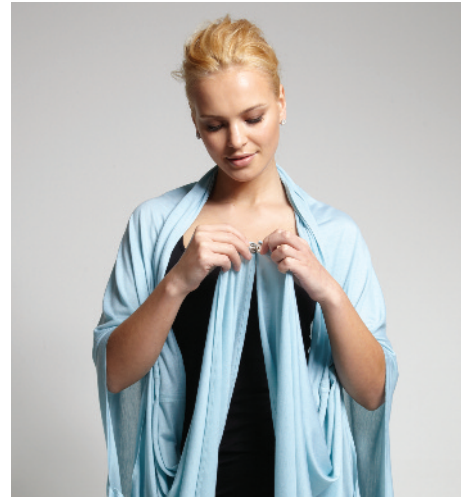
binabrianca.com



1. Open The Bina™ lengthwise behind you



2. Slip your arms through the slits



3. Take the front ends and snap together



4. Lift the connected ends over your head and place around your neck



Style tip: For a longer shrug simply stop here



5. Take the two remaining ends and snap them together



6. Lift the connected ends over your head and place around your neck



You've just learned how to make a fun shrug

