

The Bina™ scarf

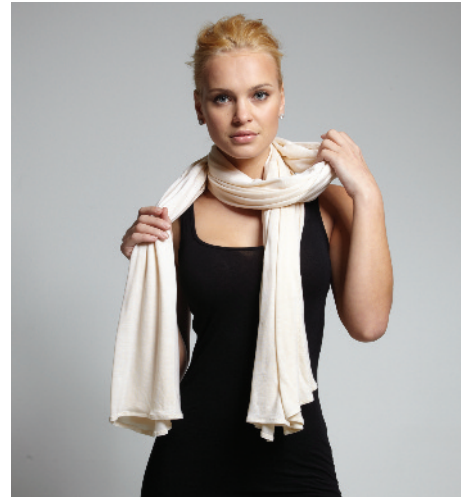
binabrianca.com



1. Gather The Bina™ lengthwise



2. Place the fabric around your neck lengthwise keeping one side longer than the other



3. Take the longer end and wrap around your neck while holding onto the loop



4. Continue with the longer end, place it under the shorter end and pull it through the loop



You've just learned how to make a fashionable scarf

