

# The Bina™ blouse

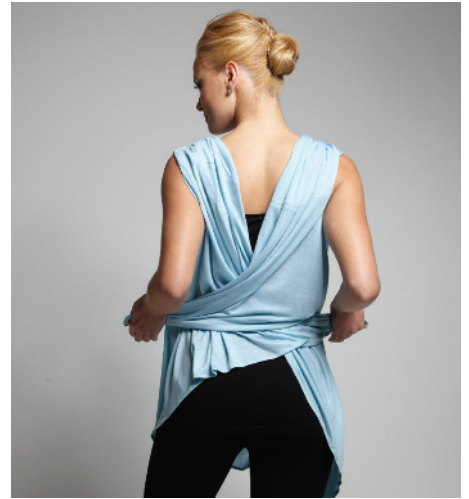
binabrianca.com



**1.** Facing The Bina™, put your arms through the slits



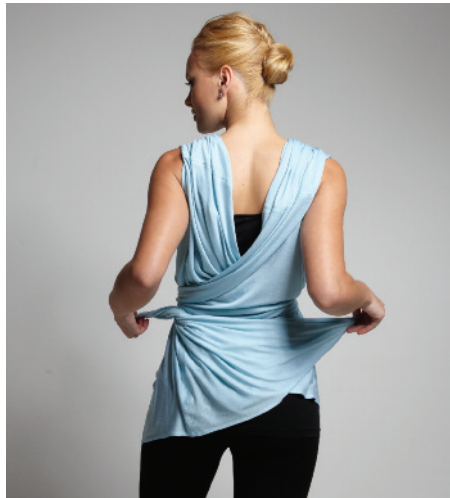
**2.** Pull both sides of the fabric up over your shoulders



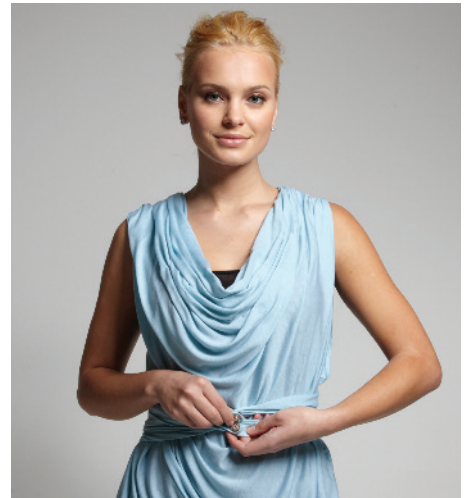
**3.** Take the furthest ends and cross them behind your back, wrapping them forward and around you



**4.** Snap the two ends together at the waist



**5.** Repeat by taking the remaining two ends and cross them behind your back, wrapping them forward and around you



**6.** Snap the two ends together and connect all of the snaps together. Gently pull and drape neckline to cover snaps.



You've just learned how to make a gorgeous blouse